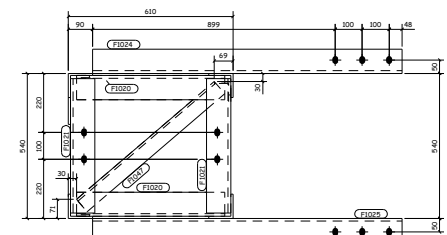
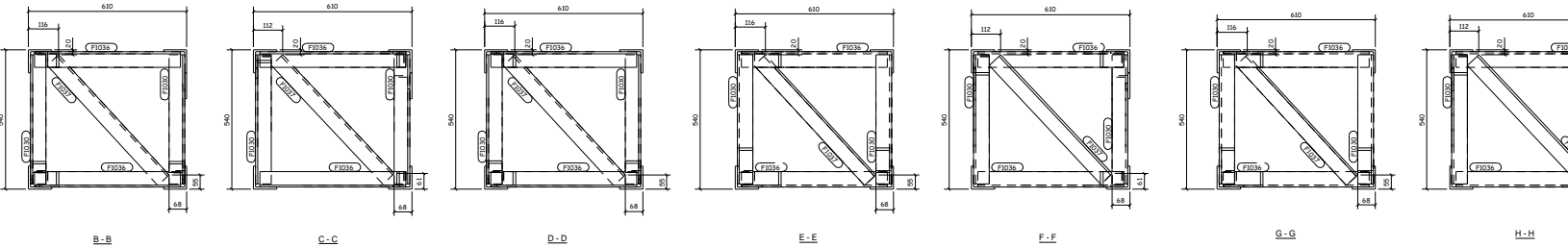
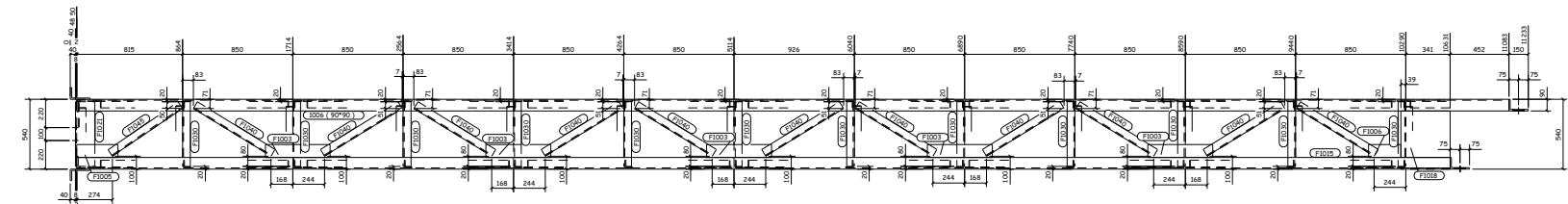
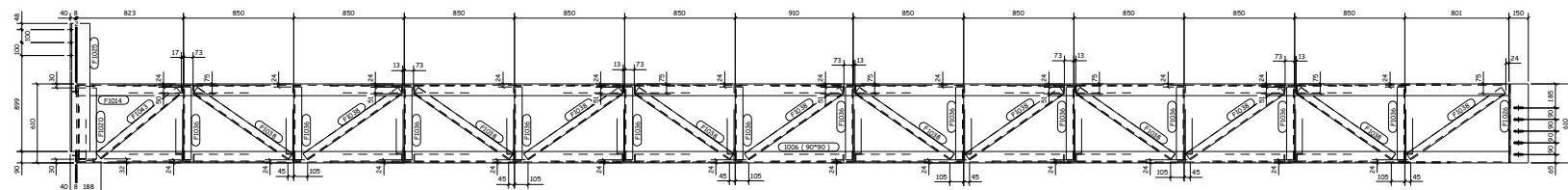
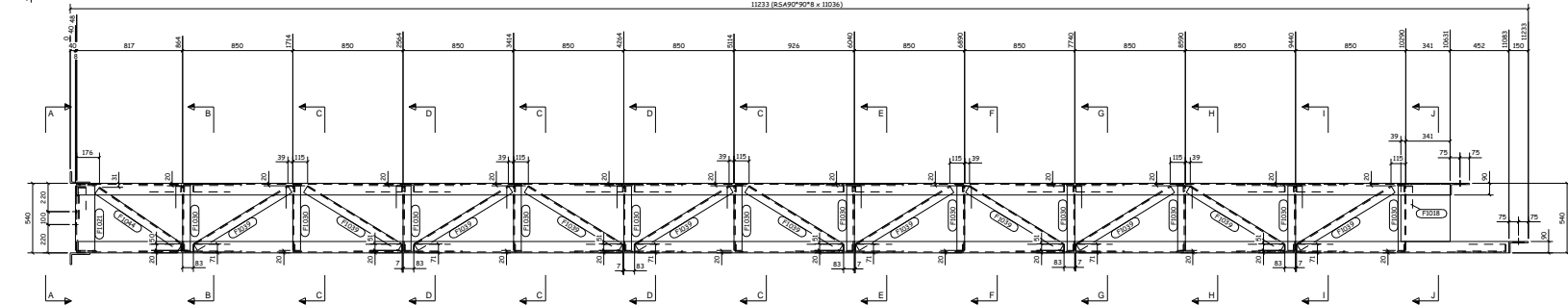
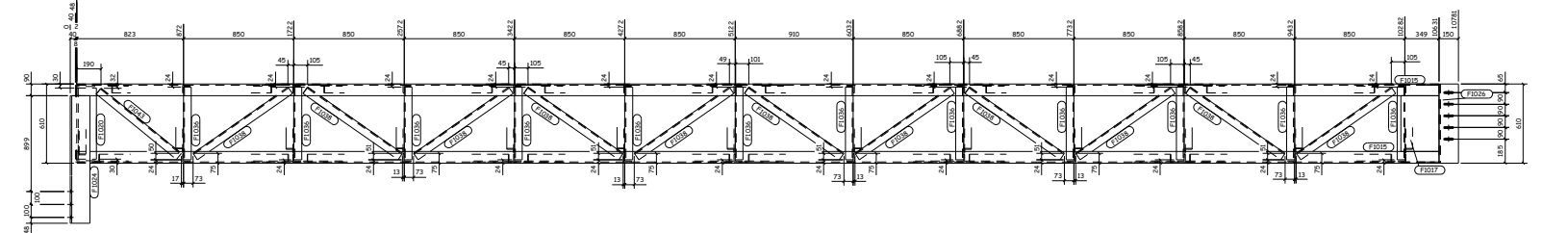


GRID LOCATION
1006 20x70

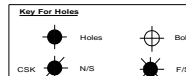
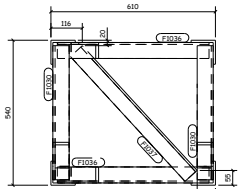
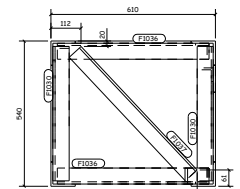
GENERAL NOTES: ALL HOLES ARE 22.0 mm UNLESS NOTED
ALL WELDS ARE 6.0 mm F/W UNLESS NOTED

MATERIAL LIST FOR ASSEMBLY MKD

Mark	Profile	Material	No.	1006			1		
				Length	Area	Weight	No. Required		
1006	RSA90°90°8	S275 JR	1	11036	3.9	120.6			
F1014	RSA90°90°8	S275 JR	1	11036	3.9	120.6			
F1015	RSA90°90°8	S275 JR	2	10583	3.7	115.6			
F1024	RSA150°90°10	S275 JR	1	1146	0.5	20.9			
F1025	RSA150°90°10	S275 JR	1	1146	0.5	20.9			
F1026	RSA150°90°10	S275 JR	2	610	0.3	11.1			
F1017	PLT8*90	S275 JR	1	430	0.3	10.3			
F1020	RSA150°90°10	S275 JR	2	550	0.3	10.0			
F1021	RSA150°90°10	S275 JR	2	500	0.2	9.1			
F1018	PLT8*380	S275 JR	2	360	0.3	8.6			
F1038	RBA60°60°8	S275 JR	23	893	0.2	6.4			
F1039	RBA60°60°8	S275 JR	11	855	0.2	6.1			
F1043	RBA60°60°8	S275 JR	2	797	0.2	5.7			
F1044	RBA60°60°8	S275 JR	1	776	0.2	5.5			
F1040	RBA60°60°8	S275 JR	11	703	0.2	5.0			
F1047	RBA60°60°8	S275 JR	1	674	0.2	4.8			
F1045	RBA60°60°8	S275 JR	1	655	0.2	4.7			
F1037	RBA60°60°8	S275 JR	12	629	0.1	4.5			
F1035	RBA60°60°8	S275 JR	24	452	0.1	4.0			
F1030	RBA60°60°8	S275 JR	24	500	0.1	3.6			
F1003	FLT8*100	S275 JR	5	500	0.1	3.1			
F1005	FLT8*100	S275 JR	1	320	0.1	2.0			
F1006	FLT8*100	S275 JR	1	249	0.1	1.6			
				Total	36.5	1151.3			



ALL OUTSIDE FACES TO FRAME TO BE FLUSH (PREP AS NECESSARY FR WELDS)



1 No RSA Marked 1006

REV	BY	DATE	AMENDMENT	CHKD	DATE	REV	BY	DATE	AMENDMENT	CHKD	DATE

SR **Robinson Construction**
S. Robinson & Sons (Engineers) Limited
Ascot Drive Industrial Estate Derby, DE24 8NJ, England. Tel (01332) 574711
Fax (01332) 861401 E-Mail - DO@robinsons.com

DRAWING CONTENTS

NO.	DESCRIPTION
1	PAINT SPECIFICATION A

CONTRACT TITLE Opal Property Group

INITIALS	DATE	SCALE	1:10
D.N.	22.10.2010		

DRAWN BY D.N. **DRAWING No** 9239 \ [1006] **REV.** SHEET A1